

# CalCheck

## LED Calibration Verification for Hygiena Luminometers Cat No.: CAL



### Description/ Intended Use:

CalCheck is a reusable device used to verify Hygiena luminometer calibration is within manufacturer's specifications. When powered on by pressing the button on CalCheck's cap, the device emits a low level of constant LED light output for 60 seconds. In the off state, CalCheck can be used as a negative control to alert users to background instrument light leakage or rare sensor calibration errors. Hygiena recommends verification of luminometer calibration with CalCheck at a regular interval (e.g., weekly, monthly) as specified by user-defined quality procedures. Incorporating CalCheck into a quality control program verifies luminometer is within specifications and operating correctly.

### Instructions:

Upon first use, CalCheck positive and negative measurements must be recorded in Table 1 to serve as reference for future calibration checks.

#### Negative Check:

1. Taking care not to press button on cap, insert CalCheck into luminometer and close lid.
2. Press "OK" to initiate measurement.
3. Record initial negative CalCheck RLU in Table 1 below. For ongoing testing refer to Interpretation of Results.

#### Positive Check:

1. Insert CalCheck into luminometer. Press button on CalCheck cap to turn device on. Button will glow green to confirm activity. (If button glows red or remains dark, battery should be replaced. See Battery Replacement).
2. Close lid and press "OK" to initiate measurement.
3. Record initial positive CalCheck RLU in Table 1 below. For ongoing testing, refer to Interpretation of Results.

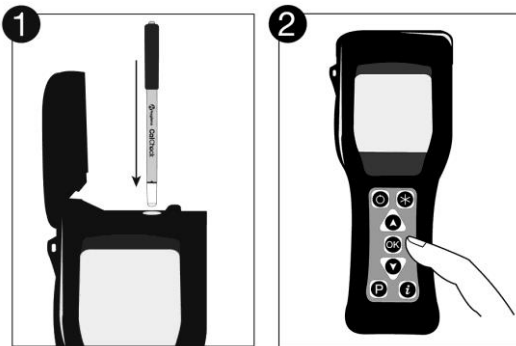


Table 1: Initial CalCheck Measurements

Instrument Serial No.:	
Negative CalCheck RLU:	
Positive CalCheck RLU:	

### Interpretation of Results:

Refer to Table 2 for in-calibration RLU ranges. Results from negative CalCheck should be within RLU range in Table 2. Results from positive CalCheck should be within RLU range in Table 2, or not vary by more than  $\pm 20\%$  from initial positive CalCheck RLU as recorded in Table 1. If CalCheck results are not within values in Table 2, or vary by more than  $\pm 20\%$  from initial CalCheck RLU as recorded in Table 1, see Troubleshooting.

Table 2: In-Calibration RLU Ranges for Hygiena Luminometers

	EnSURE (RLU)	SystemSURE Plus (RLU)
Negative	0 – 4	0 – 4
Positive	140 – 220	40 – 80
For EnSURE Touch, please refer to RLU values given in the calibration app		

### Troubleshooting:

Higher-than-expected CalCheck RLU readings indicate system calibration

failure. Contact Hygiena for technical support.

Physical contamination can cause lower-than-expected CalCheck RLU readings.

- Clean outside of rod with lint-free cloth containing isopropyl or ethyl alcohol. Air dry and repeat reading.
- Remove luminometer read chamber and clean. Refer to Frequently Asked Questions at [www.hygiena.com](http://www.hygiena.com) for cleaning instructions.
- If issue is not resolved, contact Hygiena for technical support.

### Incorporating CalCheck into a Quality Control Program:

CalCheck is designed to be incorporated into a quality control program that monitors and tracks performance of Hygiena luminometer(s). For optimum recordkeeping, it is recommended that a specific location be programmed in SureTrend data analysis software for measuring CalCheck on luminometer.

### Storage & Shelf Life:

- Store at 10 – 25 °C (50 – 77 °F) in original packaging.
- If CalCheck is exposed to extreme temperatures (direct sunlight, heat, refrigeration, or frozen), allow device to acclimate to ambient temperature (10 – 25 °C / 50 – 77 °F) for 30 minutes before use.
- Take care to not press power button during storage as this will shorten battery life.
- Replace CalCheck as needed. Refer to expiration date on label.

### Battery Replacement:

- When button cap glows red, CalCheck is not ready to perform a positive check and may be approaching end of battery life. Wait 2 minutes and try again. If red light continues to appear, battery should be replaced.
- If light remains dark upon pressing button, battery should be replaced.
- CalCheck is powered by 1-CR1025 coin lithium battery (3V) available from any common battery supplier. Battery door is located on CalCheck's black cap. Remove by inserting your fingernail along edge of door and gently removing cover. Insert new battery and replace door.

### Caution:

Wait 2 minutes between each positive reading. Repeatedly activating CalCheck may drain battery prematurely.

### Disposal:

CalCheck contains RoHS-compliant materials and a small battery. With battery in place, CalCheck should be discarded as electronic waste. With battery removed, CalCheck may be disposed as trash. CAUTION – RISK OF EXPLOSION IF BATTERY IS REPLACED BY AN INCORRECT TYPE. DISPOSE OF USED BATTERIES ACCORDING TO THE INSTRUCTIONS.

### Warranty:

Hygiena warrants CalCheck, when purchased new, to be free from defects in materials and workmanship, and will repair or replace, at its discretion, any CalCheck device which, used under proper conditions, exhibits such defects. Under the terms of this warranty, the product must be returned in the original packaging, transportation prepaid, with a copy of the Proof of Purchase, to your local distributor. Contact your local distributor to receive authorization to return the instrument, and enclose a detailed description of the problem. This warranty is provided to the original purchaser for one year from the date of purchase. In no event will Hygiena be liable for indirect, incidental or consequential damages; the original user's remedies being limited to repair or replacement of CalCheck at the manufacturer's option. Unauthorized modification of any part of CalCheck, including removal of labeling will void this Warranty.

### Contact Information:

If more information is required, please visit [www.hygiena.com](http://www.hygiena.com) or contact:

**Hygiena — Americas**  
Phone: 1.805.388.8007  
E-mail: [info@hygiena.com](mailto:info@hygiena.com)

**Hygiena — International**  
Phone: +44 (0)1923 818821  
E-mail: [enquiries@hygiena.com](mailto:enquiries@hygiena.com)