

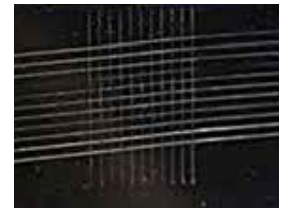
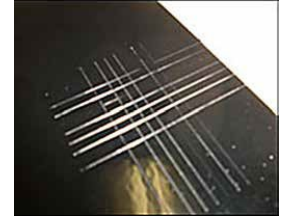
Adhesion Testing

Adhesion testing will determine the bond between the coating or paint and the substrate below. Adhesion failure can occur when a surface has not been properly prepared (cleaned) by REMOVING ALL oil and debris prior to painting.

As a quality control measure, It is highly recommended that applicators of Silver Bullet AM conduct systematic paint adhesion tests according to ASTM test method D 3359.

The images below illustrate how cuts are made in opposing directions through the coating to the substrate (bare metal) below. Adhesive tape is applied to the center area of the cut pattern and quickly removed. The remaining coated or painted squares are graded 0 through 5 by using the chart below to determine the degree of edge fracturing or complete lifting from the substrate.

Classification	% of Area Removed	Surface of Cross-cut Area From Which Flaking has Occurred for 6 Parallel Cuts & Adhesion range by %
5B	0% None	
4B	Less than 5%	
3B	5 - 15%	
2B	15 - 35%	
1B	35 - 65%	
0B	Greater than 65%	



Paint Adhesion Test Kit

The kit includes the new blade holder / handle with guide, hex wrench for changing and 1.5" glass lens), tape - PA-280630*, copy of ASTM Test Method D-3359 for use as an instruction guide, and a sturdy plastic carrying case with handle. All of the components are nested in laminated diecut foam within the case.